



*We're There.*



# PRODUCT OVERVIEW

# Pressure Gauges



	<b>DPG Digital</b>	<b>P1S 100 Series</b>	<b>P3S 300 Series</b>	<b>P9S 90 Series</b>
<b>Dial Size</b>	2.5" (63mm)	3.5" (90mm) 4" (100mm) 4.5" (115mm) 6" (150mm)	4.5" (115mm) 6" (150mm) 8.5" (215mm) 10" (250mm)	1.5" (40mm) 2" (50mm) 2.5" (63mm) 3.5" (90mm)
<b>Tube and Socket</b>	316 SS	Phosphor bronze/brass	316L SS/brass	Phosphor bronze/brass
<b>Connection</b>	1/4" NPT	1/4" NPT	1/4" NPT for 600 psi or lower 1/2" NPT for 1,000 psi or higher	1.5" dial: 1/8" NPT 2" dial: 1/8", 1/4" NPT 2.5", 3.5" dial: 1/4" NPT
<b>Range</b>	Vac-0-15,000 psi	Vac-0-5,000 psi/kPa	Vac-0-20,000 psi/kPa	Vac-0-600 psi/kPa



	<b>PDT/PDX Duplex/Differential</b>	<b>PEM/PEM-LF/PEU Economy</b>	<b>PET/PET-LF Gas or Water Test</b>	<b>PFE Sprinkler</b>
<b>Dial Size</b>	4.5" (115mm) 6" (150mm)	1.5" (40mm) 2" (50mm) 2.5" (63mm) 4" (100mm)	Gas Test: 2" (50mm) Water Test: 2.5" (63mm)	3.5" (90mm)
<b>Tube and Socket</b>	316L SS/phosphor bronze/brass	Phosphor bronze/brass or lead free phosphor bronze/brass	Phosphor bronze/brass or lead free phosphor bronze/brass	Phosphor bronze/brass
<b>Connection</b>	1/4" NPT	1.5" dial: 1/8" NPT 2" dial: 1/8", 1/4" NPT 2.5", 4" dial: 1/4" NPT	Gas Test: 3/4" FNPT Water Test: 3/4" female swivel hose	1/4" NPT
<b>Range</b>	15-600 psi	Vac-0-5,000 psi/kPa	0-300 psi/kPa	0-300 psi/kPa or 0/80/retard-250 psi/kPa



	<b>PN2/PN2-ZR NACE - MR0175-2002</b>	<b>PPC/PPC-ZR Process</b>	<b>PPD/PRD/PSD/PVD Differential</b>	<b>PRL Regulator</b>
<b>Dial Size</b>	4" (100mm) 6" (150mm)	4.5" (115mm)	2.5" (63mm) 3.5" (90mm) 4.5" (115mm)	1.5" (40mm) 2" (50mm)
<b>Tube and Socket</b>	316 SS	316L SS/phosphor bronze/brass	SS and others	316 SS
<b>Connection</b>	1/4" or 1/2" NPT	1/4" or 1/2" NPT	1/4" or 1/2" NPT and others	1.5" dial: 1/8" NPT 2" dial: 1/8", 1/4" NPT
<b>Range</b>	Vac-0-20,000 psi/kPa	Vac-0-20,000 psi/kPa	"H <sub>2</sub> O-110 psid	Vac-0-5,000 psi/kPa

# Pressure Gauges



PAG/PSQ 3A Sanitary	PAM Ammonia	PBC Forged Brass Case	PCC Colour Coded	PCT/PCT-LF Contracto
2.5" (63mm) 4" (100mm)	2.5" (63mm), 3.5" (90mm) 4" (100mm), 6" (150mm) 8.5" (215mm) 10" (250mm)	2.5" (63mm) 4" (100mm)	4" (100mm)	4.5" (115mm)
316L SS	316L SS	Brass	316L SS/phosphor bronze/brass	Phosphor bronze/brass or lead free phosphor bronze/brass
316 SS, electro-polished with 1.5" or 2" Tri-Clamp®	1/4" NPT	2.5" dial: 1/4" NPT 4" dial: 1/4", 1/2" NPT	1/4" or 1/2" NPT	1/4" NPT
Vac-0-1,000 psi/bar	Vac-0-300 psi/°F	Vac-0-10,000 psi/kPa	Vac-0-20,000 psi/kPa	Vac-0-5,000 psi/kPa



PFP Premium Filled	PFP-ZR Premium StabilizR™	PFQ/PFQ-LF Filled	PFQ-ZR StabilizR™	PLP Low Pressure
2.5" (63mm) 4" (100mm) 6" (150mm) Bayonet ring	2.5" (63mm) 4" (100mm)	1.5" (40mm), 2" (50mm) 2.5" (63mm) 4" (100mm) Crimped ring	2.5" (63mm)	2.5" (63mm) 4" (100mm) 4.5" (115mm) 6" (150mm)
316 SS	316 SS	316 SS/phosphor bronze or 316 SS/lead free phosphor bronze	Phosphor bronze/brass	316 SS/brass
2.5" dial: 1/4" NPT 4", 6" dial: 1/4", 1/2" NPT	2.5" dial: 1/4" NPT 4" dial: 1/4", 1/2" NPT	1.5" dial: 1/8" NPT 2" dial: 1/8", 1/4" NPT 2.5" dial: 1/4" NPT, 7/16"-20 SAE 4" dial: 1/4", 1/2" NPT	1/4" NPT	1/2" NPT
Vac-0-20,000 psi/kPa	Vac-0-20,000 psi/kPa	Vac-0-15,000 psi/kPa - PFQ Vac-0-15,000 psi/bar - SAE	Vac-0-10,000 psi/kPa	Vac-0-10 psi/kPa



PSC Safety Case	PSP Spiral Tube	PTG Test	PTS Tube Stub	PWL Welding
4" (100mm) 4.5" (115mm) 6" (150mm)	1" (25mm), 1 1/8" (30mm) 1.25" (32mm), 1.5" (40mm)	4" (100mm) 6" (150mm) Mirror band for precise reading	2.5" (63mm)	1.5" (40mm) 2" (50mm) 2.5" (63mm)
316L SS	304 SS/beryllium copper/brass	316 SS/brass	316L SS	Phosphor bronze/brass
1/4" or 1/2" NPT	1/8" NPT	1/4" or 1/2" NPT	1/4" tube stub	1/4" NPT
Vac-0-20,000 psi/kPa	0-5,000 psi	Vac-0-10,000 psi/kPa	Vac-0-5,000 psi/kPa	0-4,000 psi or bar

# Thermometers



	TAG HVAC Gold Case	TAS/TAS-LF Industrial 5"	TBM Bi-metal	TBT HVAC Bi-metal
<b>Dial/Scale</b>	4.5" (115mm), 6" (150mm)	5" (125mm)	1" (25mm), 2" (50mm) 3" (75mm), 4" (100mm) 5" (125mm), 6" (150mm)	3.5" (90mm)
<b>Sensing Element</b>	Brass	Brass or lead free brass	SS	Brass
<b>Bulb/Stem Length</b>	3.5" (90mm), 6" (150mm)	3.5" (90mm), 6" (150mm)	2.5" (63mm) - 48" (1219mm)	2" (50mm)
<b>Accuracy</b>	±2% full scale	±2% full scale	±1% full scale	±2% full scale



	TCT Clamp-On	TIM/TIM-LF Industrial 9"	TMT Bi-metal with RTD	TNC Non-Contact
<b>Dial/Scale</b>	2.5" (63mm)	9" (229mm)	2" (50mm)	LCD size: 1.125" (30mm) x 0.75" (19mm)
<b>Sensing Element</b>	Bi-metallic coil	Brass or lead free brass	Bi-metallic coil	-
<b>Bulb/Stem Length</b>	-	3.5" (90mm), 6" (150mm)	-	-
<b>Accuracy</b>	±3% full scale	±1% full scale	±2% full scale	±2% of reading



	TRR Remote Reading	TSD/THS Solar Digital	TSW/TSW-LF Hot Water	TTD Tridicator
<b>Dial/Scale</b>	2.5" (63mm), 3.5" (90mm) 4" (100mm), 4.5" (115mm) 6" (150mm), 8.5" (215mm)	TSD: LCD size: 2.25" (57mm) x 2.25" (57mm) THS: 3" (75mm)	Dial: 2" (50mm) or 2.5" (63mm) Scale: 8" (200mm)	2.5" (63mm) 3" (75mm)
<b>Sensing Element</b>	SS/brass	TSD: Brass THS: SS	Brass or lead free brass	Brass
<b>Bulb/Stem Length</b>	6" (150mm)	TSD: 3.5" (90mm) THS: 2.5" (63mm) - 24" (600mm)	Dial: 1.5" (40mm) Scale: 2.5" (63mm)	2.5" (63mm): 2.15" (55mm) stem 3" (75mm): 2.75" (70mm) stem
<b>Accuracy</b>	Gas actuated: ±0.5% full scale Vapour actuated: ±2% full	±1 of reading	±1% full scale	Pressure: ±3-2-3% Temperature: ±3% full scale

## Pressure Transmitters



### LE1 High-Volume OEM Transmitter

**Features:** Compact SS with ceramic sensor. Developed for high-volume OEM applications. CE approved, ±0.5% accuracy (±1% ≤ 45 psi)

**Range:** Vac to 8,700 psi

**Applications:** Pump and compressor monitoring, refrigeration and HVAC



### LE3 General Purpose Transmitter

**Features:** Can be utilized in many applications. Rugged stainless steel, CE, CSA, NEMA 4X, ±0.5% accuracy

**Range:** Vac to 5,000 psi

**Applications:** Industrial machinery, hydraulics & pneumatics, compressor controls, boilers, chillers, AC & refrigeration



### LIS Intrinsically Safe Transmitter

**Features:** Intrinsically safe design for hazardous areas. Rugged stainless steel, CE, CSA, NEMA 4X ±0.25% accuracy

**Range:** Vac to 8,700 psi

**Applications:** Appropriate for all hazardous areas where an intrinsically safe rating is required



### LXP Explosion Proof Transmitter

**Features:** Designed for explosion proof environments

**Range:** Vac to 10,000 psi

**Applications:** Hazardous locations in oil and gas installations including pump and compressor controls

## Diaphragm Seals



### Features:

Suitable for applications with corrosive media or where clogging is a concern. Available in various types of materials, housings and diaphragms. Flanges available in many sizes

### Ranges:

**D10 PVC Diaphragm Seal** Vac-200 psi

**D15 In Line Seal** 50-5,800 psi

**D20 Sanitary Seal** 30-600 psi

**D30 High Pressure Seal** 1,000-6,000 psi

**D40 General Purpose 1-pc Seal** 15-1,000 psi

**D44 Flanged Diaphragm Seal** Vac-2,500 psi

**D46 Flanged Flush Mount Seal** 30-1,300 psi

**D50 Compact Seal** 100-1,000 psi

**D70 2-pc Industrial Seal** Vac-2,500 psi

**D71 2-pc Industrial NACE Seal** 30-2,500 psi

**D81 Isolation Ring** Vac-1,000 psi

**D85 In Line Flow Thru Seal** 30-600 psi

**D90 Saddle Weld Seal** 30-600 psi

## Pressure Switches



### Features:

Available in a variety of pressure ranges and actuation methods.

### Ranges:

**2WPS General Purpose**

Vac - 500 psi

**3WPS Industrial**

30 - 1,600 psi

**4WPS Low Pressure Diaphragm**

"H<sub>2</sub>O to 150 psi

**5WPS Differential**

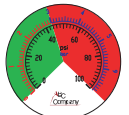
0 to 5,000 psi

**9WPS Explosion Proof**

Vac - 10,000 psi



## Accessories



### Features and Ranges:

**SNV/SNV-LF Brass or Lead Free Brass Needle Valve:** 1/4" NPT FxF, 400 psi

**NVA Stainless Steel Needle Valve:** 316 SS or carbon steel body, 1/4" to 1" NPT FxF, MxF, straight or angle body

Soft seat: 6,000 psi  
Hard seat: 10,000 psi

**SOP Over Pressure Protector:** SS 1/4" or 1/2" NPT Bellows type: 3-20 psi to 15-90 psi  
Piston type: 90-230 psi to 1,450-5,800 psi

More accessories are available. Please contact us for a full list of products.

**SSN/SSN-LF Snubber:** Brass, lead free brass or stainless steel, 1/4" or 1/2" NPT

Brass: 10,000 psi  
Stainless steel: 20,000 psi

**SSP Syphon:** Steel, brass or SS, 1/4" or 1/2" NPT, 3,200 psi

**SMV/SMV-LF Mini Ball Valve:** Brass or lead free brass, 1/4" NPT FxF, MxF, 400 psi

**STP/STP-LF Test Plug:** Brass or lead free brass, 1/4" or 1/2" NPT, 1,000 psi

**SCT Cooling Tower:** 316 SS 1/4" or 1/2" NPT MxF, 1,500 psi

**Thermowell:** Bi-metal, Sanitary, Socket-weld, Weld-in, Flanged, Stepped, Tapered

### Custom Dials:

All custom dials are manufactured to meet your specifications

Products with an "LF" suffix are available with lead free wetted parts

# WINTERS INSTRUMENTS

MANUFACTURER OF INDUSTRIAL INSTRUMENTATION



**Winters Instruments is a global manufacturer of premium quality pressure and temperature instrumentation, with distribution partners in over 90 countries. Please contact us for your nearest Regional Manager.**

**Corporate - Canada**

Winters Instruments  
121 Rainside Road  
Toronto, Ontario  
M3A 1B2  
Tel: 416-444-2345  
1-800-WINTERS  
Fax: 416-444-8979  
sales@winters.com

**Canada - Calgary**

Winters Instruments  
4116 8th Street SE  
Calgary, Alberta  
T2G 3A7  
Tel: 403-723-6645  
1-800-WINTERS  
Fax: 403-723-6647  
calgary@winters.com

**USA - Buffalo**

Winters Instruments  
600 Ensminger Road  
Buffalo, New York  
14150  
Tel: 716-874-8700  
1-800-WINTERS  
Fax: 716-874-8800  
usasales@winters.com

**USA - Houston**

Winters Instruments  
10757 Cutten Road, Building 7  
Houston, Texas  
77066  
Tel: 281-880-8607  
1-800-WINTERS  
Fax: 281-880-8614  
usasales@winters.com

**Asia - Shanghai**

Winters Instruments  
Shanghai WitHub Hi-Tech  
Business Center, Suite 308  
No. 333 Hongqiao Road  
Shanghai 200030 China  
Tel: 86-21-6104-2610  
Fax: 86-21-6104-2615  
asiasales@winters.com  
www.wintersasia.com

**Asia - Beijing**

Winters Instruments  
Rm. 1403, No. 36  
Longbao Building, Maizidian Street  
Chaoyang District  
Beijing 100125 China  
Tel: 86-10-8773-1315  
Fax: 86-10-8773-1315  
asiasales@winters.com  
www.wintersasia.com

**Latin America**

Winters Instruments  
Albarellos 1916 1° Piso E1  
B1640BIN, Martinez  
Buenos Aires, Argentina  
Tel: 54-11-4733-3003  
Fax: 54-11-4733-0572  
latinsales@winters.com  
www.winters.com.ar

**Middle East - North Africa - Europe**

Winters Instruments  
P.O. Box 371722  
Dubai Airport Free Zone  
Dubai, United Arab Emirates  
Tel: 971-4295-9177  
Fax: 971-4295-9177  
menasales@winters.com



Distributed by: